

Polymer manhole cover 1,5t.

DIN 16833:2009

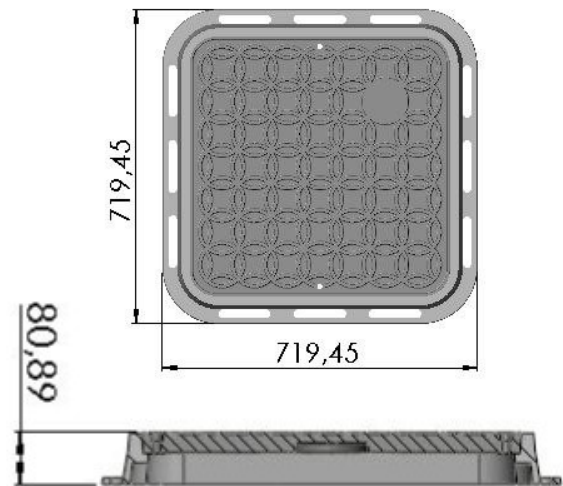
| Color | Locking device | Case Diameter, mm | Cap Diameter, mm | Height, mm | Weight, kg | Maximum load | Material |
|-------|----------------|-------------------|------------------|------------|------------|--------------|-------------------|
| Black | without lock | 750 | 610 | 70 | 11,10 | 1,5t. | Polyethylene HDPE |
| Green | without lock | 750 | 610 | 70 | 11,10 | 1,5t. | Polyethylene HDPE |
| brown | without lock | 750 | 610 | 70 | 11,10 | 1,5t. | Polyethylene HDPE |
| Black | with lock | 750 | 610 | 70 | 11,10 | 1,5t. | Polyethylene HDPE |
| Green | with lock | 750 | 610 | 70 | 11,10 | 1,5t. | Polyethylene HDPE |
| brown | with lock | 750 | 610 | 70 | 11,10 | 1,5t. | Polyethylene HDPE |

Specifications:

- Material - plastic
- Body external diameter – 750 mm.
- Body inner diameter – 580 mm.
- Height – 70 mm.
- Diameter of cover -610 mm
- Weight – 11 kg.
- Service temperature range: from -50⁰ to +50⁰
- Color permanence: painted over to the full depth, does not fade.
- Warranty operating life – 1 year
- Average operation time – 20 years
- manhole cover is tested with a force of 1,5 tons.
- Round polymer manhole cover Danaplast is manufactured using modern technologies by recycled polymer compaction method.

Polymer manhole covers can be used at the following facilities:

1. Cable wells;
2. Facilities for engineering networks on lawns;
3. Objects of engineering networks on the sidewalks.



Polymer manhole cover square 1,5t.

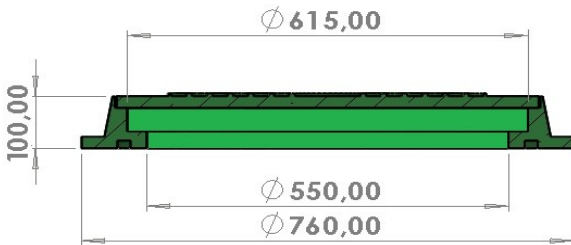
| Color | Locking device | Height, mm | Weight, kg | Maximum load | Material |
|-------|----------------|------------|------------|--------------|-------------------|
| Black | without lock | 80,00 | 11,6 | 1,5t. | Polyethylene HDPE |
| Green | without lock | 80,00 | 11,6 | 1,5t. | Polyethylene HDPE |
| brown | without lock | 80,00 | 11,6 | 1,5t. | Polyethylene HDPE |
| Black | with lock | 80,00 | 11,6 | 1,5t. | Polyethylene HDPE |
| Green | with lock | 80,00 | 11,6 | 1,5t. | Polyethylene HDPE |
| brown | with lock | 80,00 | 11,6 | 1,5t. | Polyethylene HDPE |

Specifications:

- Material - plastic
- Height – 80,00 mm.
- Weight – 11.6 kg.
- Service temperature range: from -50⁰ to +50⁰
- Color permanence: painted over to the full depth, does not fade.
- Warranty operating life – 1 year
- Average operation time – 20 years
- manhole cover is tested with a force of 1,5 tons.
- Round polymer manhole cover Danaplast is manufactured using modern technologies by recycled polymer compaction method.

Polymer manhole covers can be used at the following facilities:

1. Cable wells;
2. Facilities for engineering networks on lawns;
3. Objects of engineering networks on the sidewalks.



Polymer manhole cover 3t.

DIN 16833:2009

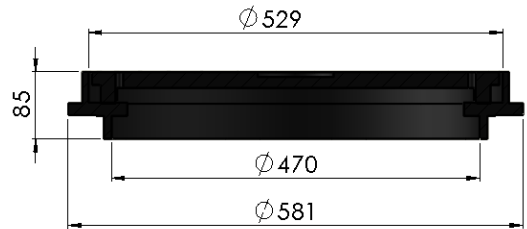
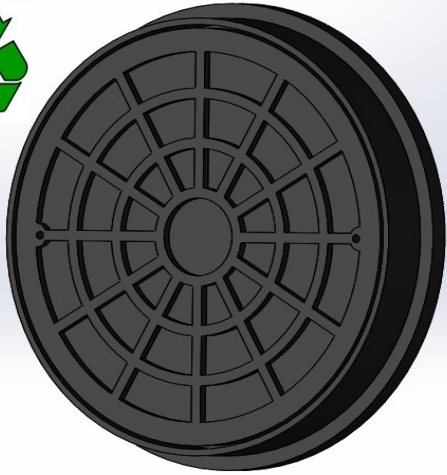
| Color | Locking device | Case Diameter, mm | Cap Diameter, mm | Height, mm | Weight, kg | Maximum load | Material |
|-------|----------------|-------------------|------------------|------------|------------|--------------|-------------------|
| Black | without lock | 760 | 615 | 100 | 13,60 | 3t. | Polyethylene HDPE |
| Green | without lock | 760 | 615 | 100 | 13,60 | 3t. | Polyethylene HDPE |
| brown | without lock | 760 | 615 | 100 | 13,60 | 3t. | Polyethylene HDPE |
| Black | with lock | 760 | 615 | 100 | 13,60 | 3t. | Polyethylene HDPE |
| Green | with lock | 760 | 615 | 100 | 13,60 | 3t. | Polyethylene HDPE |
| brown | with lock | 760 | 615 | 100 | 13,60 | 3t. | Polyethylene HDPE |

Specifications:

- Material - plastic
- Body external diameter – 760 mm.
- Body inner diameter – 550 mm.
- Height – 100 mm.
- Diameter of cover – 615 mm.
- Weight – 13.6 kg.
- Service temperature range: from -50⁰ to +50⁰
- Color permanence: painted over to the full depth, does not fade.
- Warranty operating life – 1 year
- Average operation time – 20 years
- manhole cover is tested with a force of 3 tons.
- Round polymer manhole cover Danaplast is manufactured using modern technologies by recycled polymer compaction method.

Polymer manhole covers can be used at the following facilities:

1. Cable wells;
2. Facilities for engineering networks on lawns;
3. Objects of engineering networks on the sidewalks.



Polymer manhole cover 1t.

| Color | Locking device | Case Diameter, mm | Cap Diameter, mm | Height, mm | Weight, kg | Maximum load | Material |
|-------|----------------|-------------------|------------------|------------|------------|--------------|--------------|
| Black | without lock | 581 | 529 | 85 | 8,00 | 1t. | Polyethylene |
| Green | without lock | 581 | 529 | 85 | 8,00 | 1t. | Polyethylene |

Specifications:

- Material - plastic
- Body external diameter – 581 mm.
- Body inner diameter – 470 mm.
- Height – 85 mm.
- Diameter of cover – 529 mm.
- Weight – 8,0 kg.
- Service temperature range: from -50⁰ to +50⁰
- Color permanence: painted over to the full depth, does not fade.
- Warranty operating life – 1 year
- Average operation time – 20 years
- manhole cover is tested with a force of 1 tons.

Polymer manhole covers can be used at the following facilities:

1. Cable wells;
2. Facilities for engineering networks on lawns;
3. Objects of engineering networks on the sidewalks.

